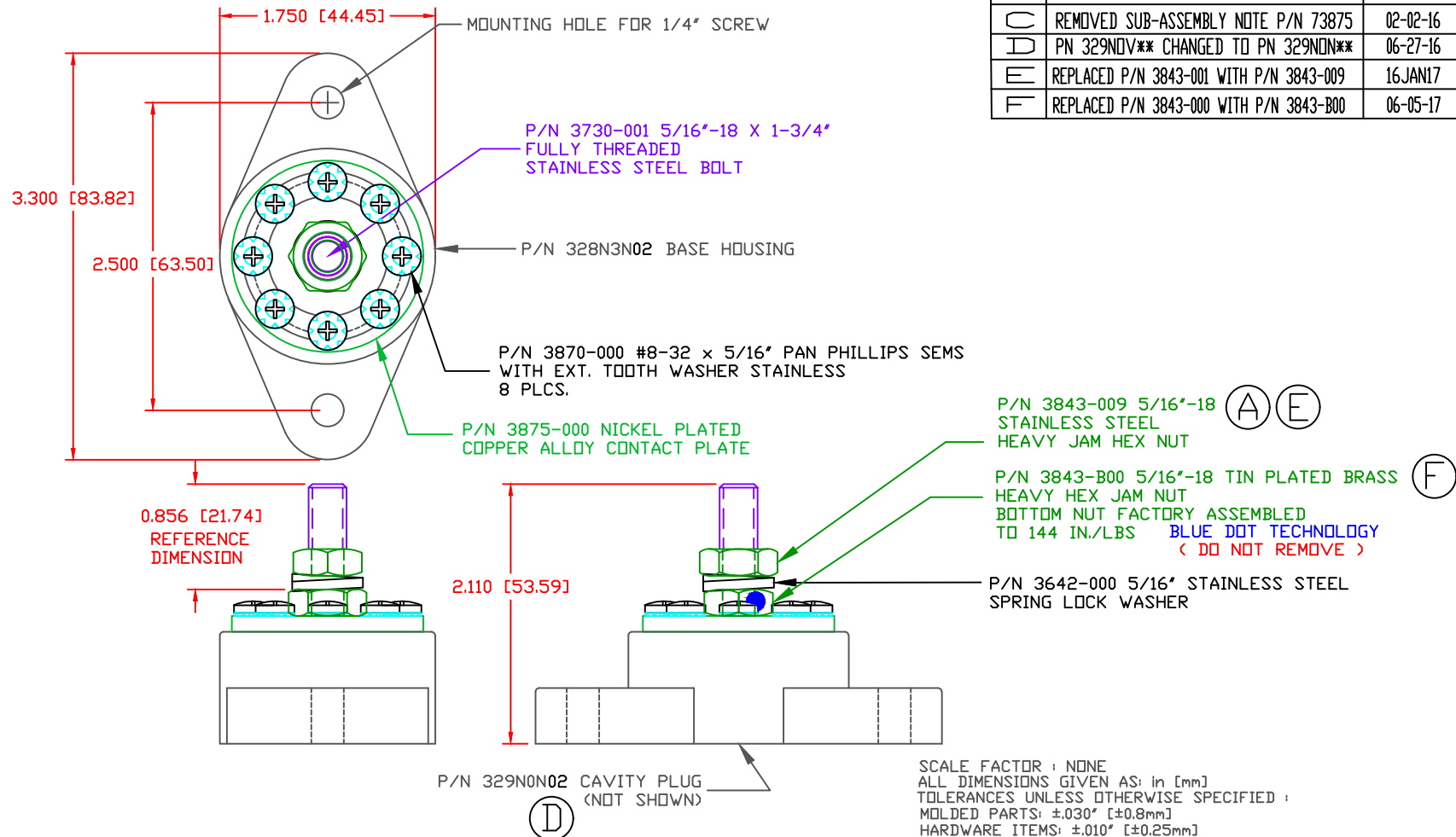


THE INFORMATION CONTAINED IN THIS DRAWING IS THE SOLE PROPERTY OF VTE INCORPORATED. ANY REPRODUCTION IN PART OR WHOLE WITHOUT THE WRITTEN PERMISSION OF VTE INCORPORATED IS PROHIBITED. VTE MAKES NO WARRANTY, EXPRESSED OR IMPLIED, AS TO THE SUITABILITY OF A PRODUCT FOR ANY INTENDED USE. THE CUSTOMER SHALL BEAR THE SOLE RESPONSIBILITY OF DETERMINING THE SUITABILITY OF ANY VTE PRODUCT FOR ITS END USE.

LTR.	REVISIONS	DATE	INT.
A	3843-001 WAS 3843-000	10-10-06	BRH
B	ADDED SUB-ASSEMBLY P/N 73875	10-11-06	BRH
C	REMOVED SUB-ASSEMBLY NOTE P/N 73875	02-02-16	RAS
D	PN 329NOV** CHANGED TO PN 329NON**	06-27-16	MDL
E	REPLACED P/N 3843-001 WITH P/N 3843-009	16JAN17	RAS
F	REPLACED P/N 3843-000 WITH P/N 3843-B00	06-05-17	JMM



INCLUDES P-16808110001 BLUE DOT MULTI LABEL, 1 PER CONTAINER  
 RECOMMENDED MAXIMUM TORQUE: 5/16-18 NUT 120 IN./LBS.  
 #8 SCREWS 15 IN./LBS.  
 AMPERAGE RATING: 160A @ 12VDC (8 X 20 AMP CIRCUITS)  
 VOLTAGE RATING: 48 VOLTS DC MAX.

MATERIAL PART NO: 711210502  
 MATERIAL: GLASS FILLED NYLON  
 VENDOR PART NO: NYLON N2015 HL NAT  
 SPECIFIC GRAVITY: 1.23  
 MELTING TEMP: 515 F [268 C]  
 U.L. RATING: UL 94 HB



VTE Incorporated  
 5437 Robinson Road, P.O. Box 790  
 Pellston, Michigan 49769  
 Telephone: 1-800-527-9256, 231-539-8000  
 FAX: 231-539-0914

REF:	DATE:	DRN BY:	BRH	WEIGHT:
CUSTOMER DIMS	04-09-03	CHK'D BY:	BRH	
TITLE:			5/16" POWER DISTRIBUTION POST	SCALE:
MATERIAL:		PART NO.		
COLOR:	DRG CLASS	REV F	77831N02	